



## Milestone Software

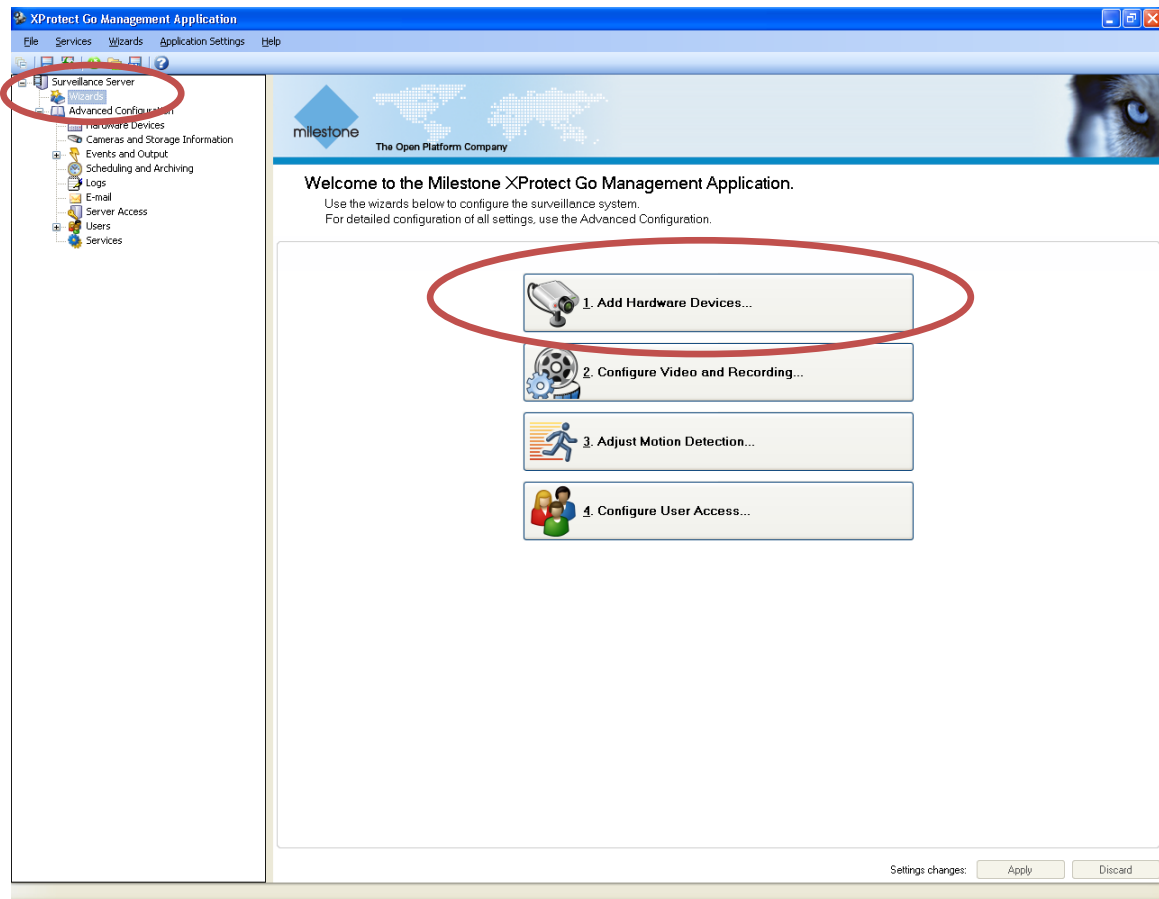
Milestone offer a free software suite called XProtect which runs up to 8 IP cameras, it has many limitations you can read all details online, here we show the process to add Onvif camera to this. For all other version the process will be the same.

Link for software downloads is given below.

<http://www.milestonesys.com/Downloads>

Also be sure to download the latest device pack to enable better support for Onvif v1.02

1. After you have completed the installation of your milestone software you will be presented with the following:

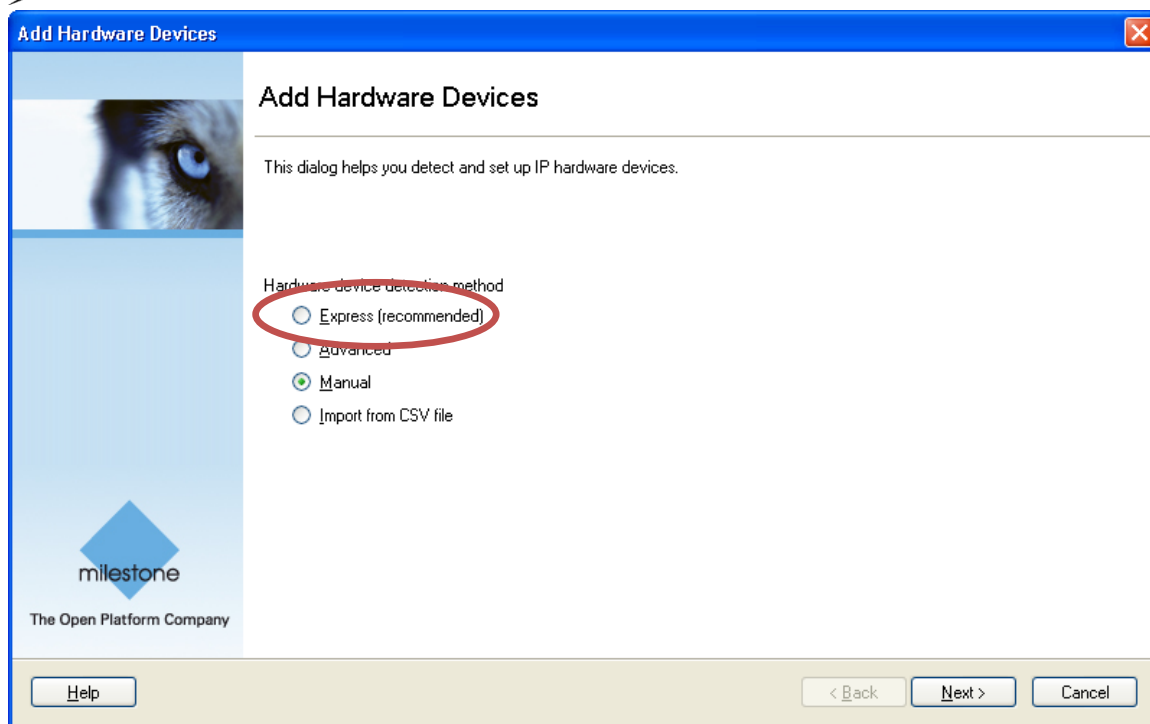


2. Now click the **Wizard**, this is the first option on the left side of the tree selection.

And then you have the 5 options show above. The first one is of course Add Hardware Device.

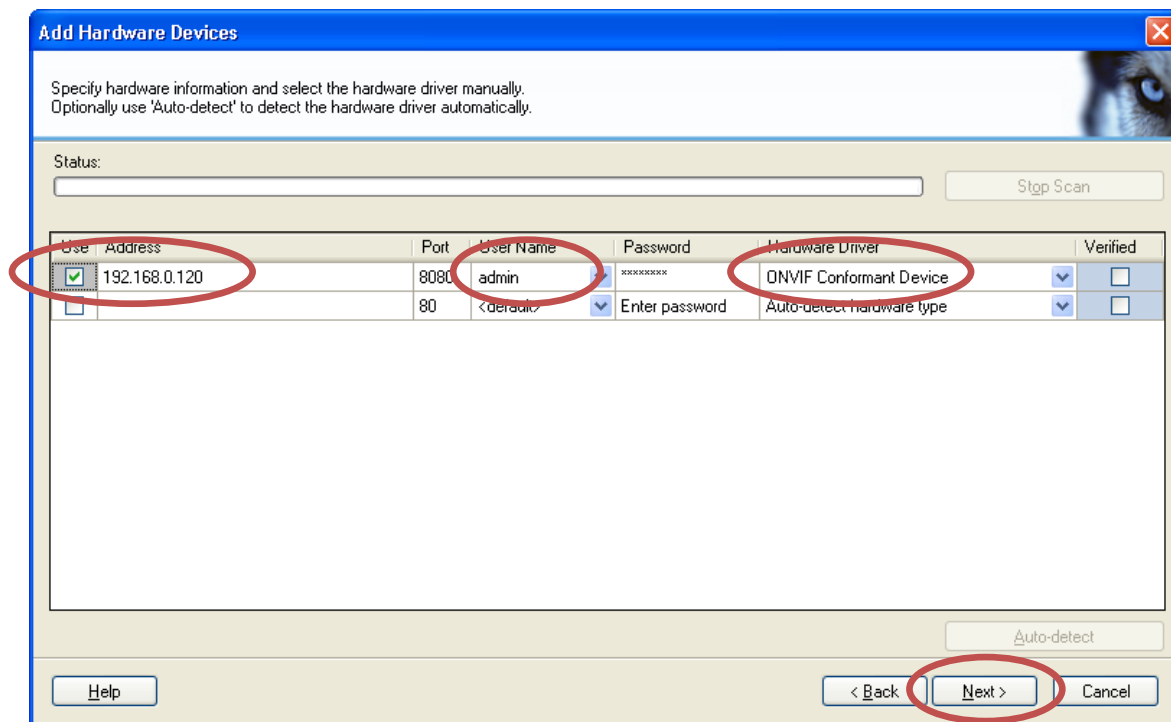
3. The following shows the options you are able to choose. For Onvif v1.02 you need to specify **Express** this currently is the suggested method.

4. Select the third option on the Add Hardware Device as shown below:



5. Now the below shows all the details you need to add.

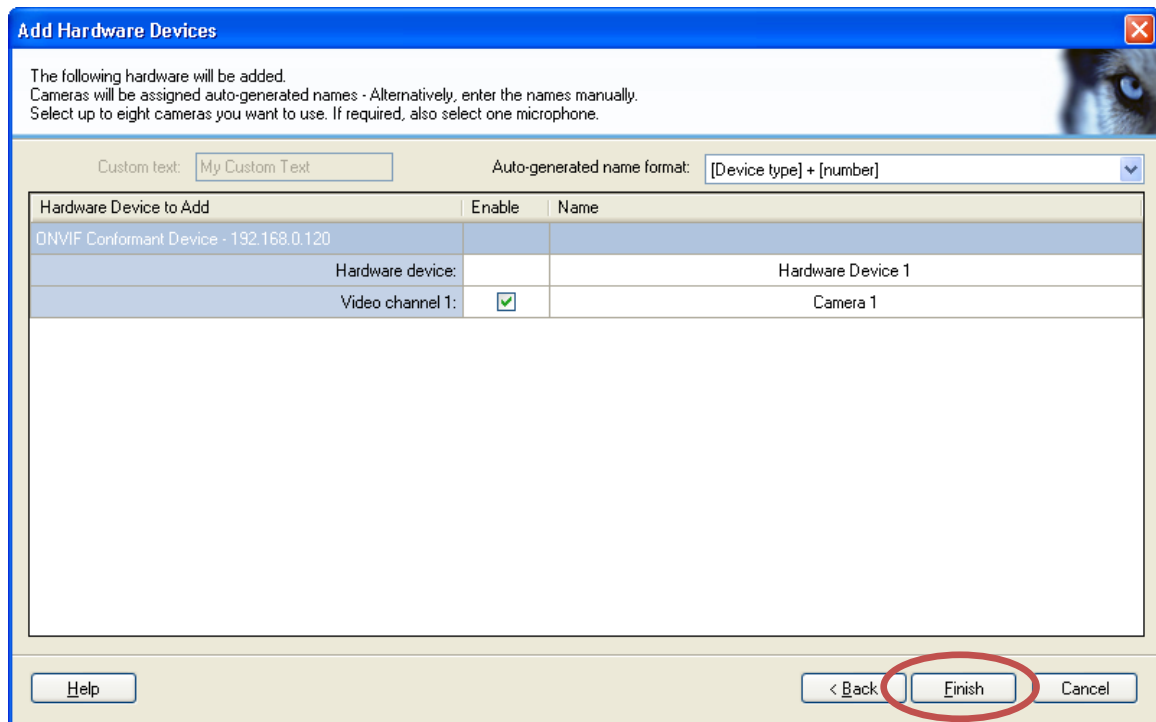
Milestone will auto detect all Onvif compliant cameras, and let you add each one to the system as required. You only need to specify the username and password and click Next, be sure to tick box the camera you want to add.



Once you have clicked the Next the system will validate the camera is connected, and present with the



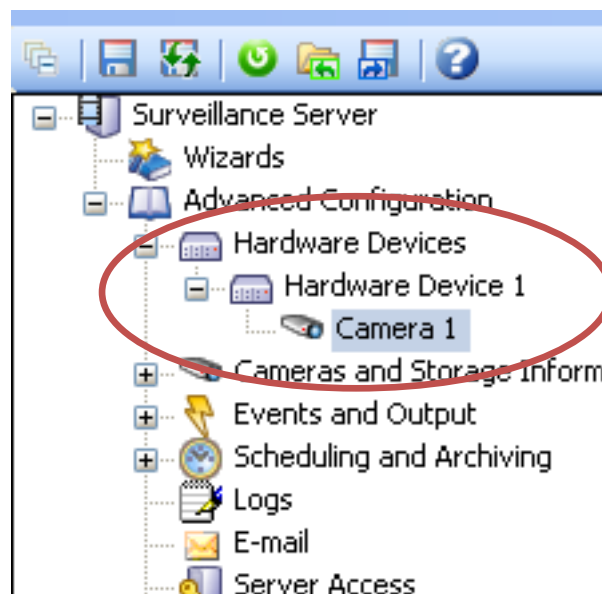
following screen information.



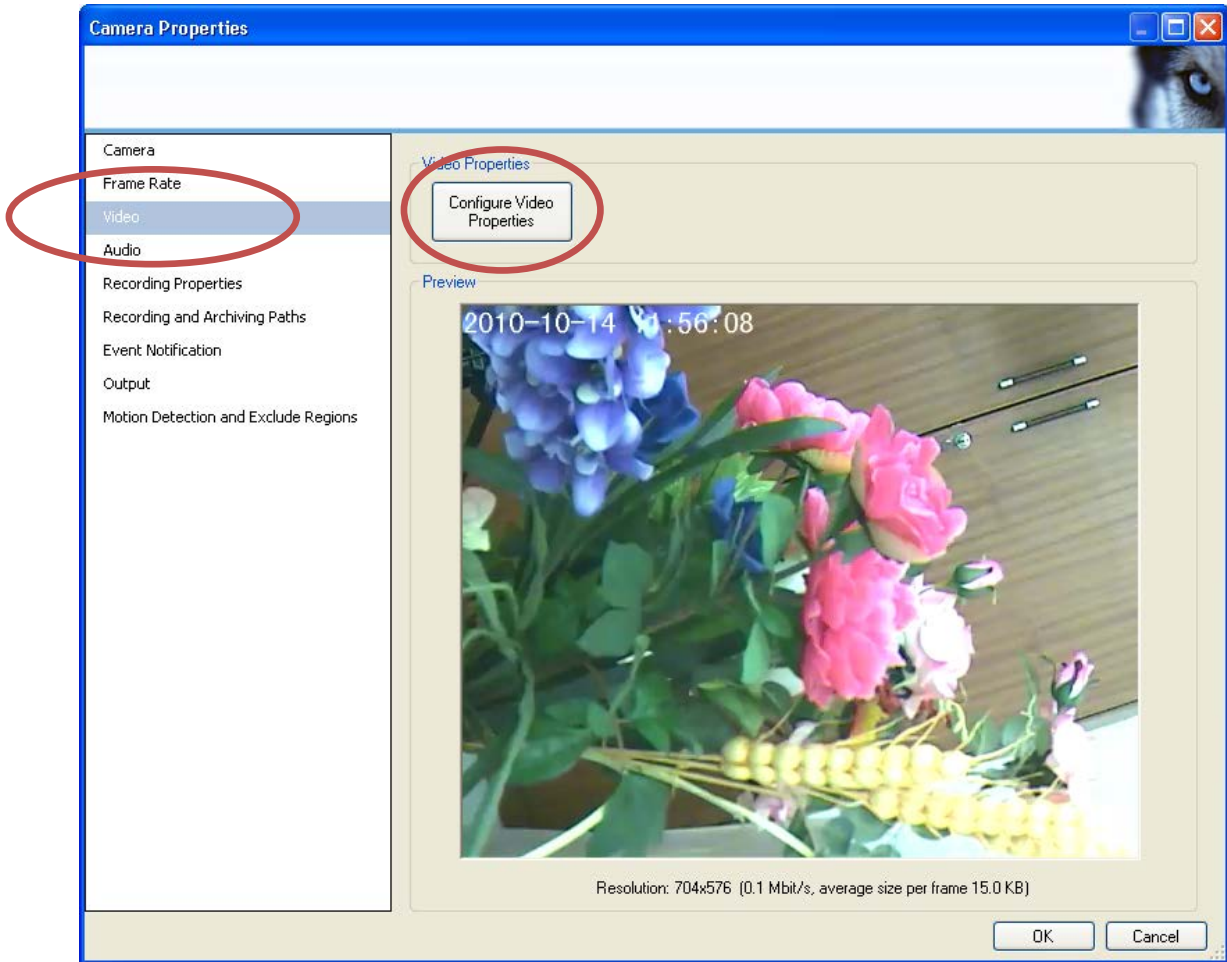
6. Click Finish and the camera addition is completed.

7. To setup recording and additional functions you can use the additional options on the wizard selection.

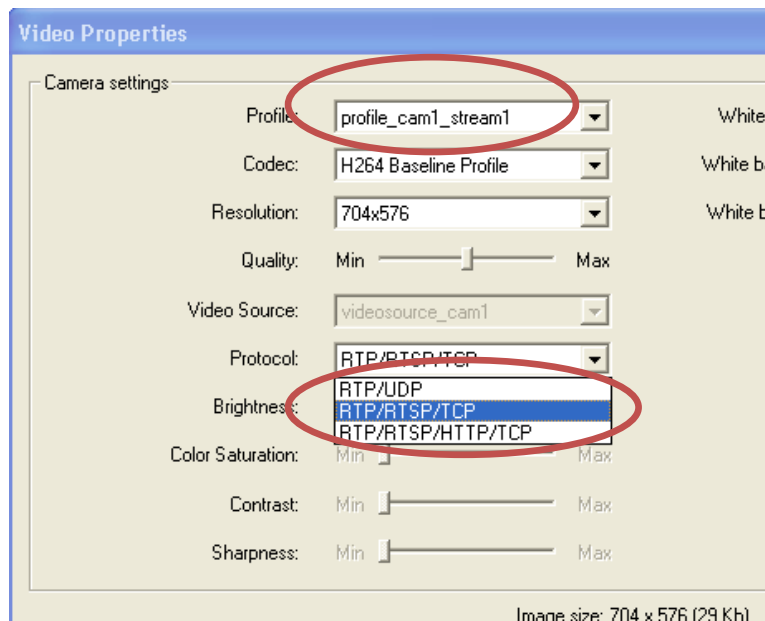
After the camera and other setting has been done, you need to make modifications to just a few of the Camera properties. You expand the Hardware Devices tree and right click on Camera 1



8. Now the selection of options are available for the camera and first you need select the **Video**  
Then select the **Configure Video Properties**

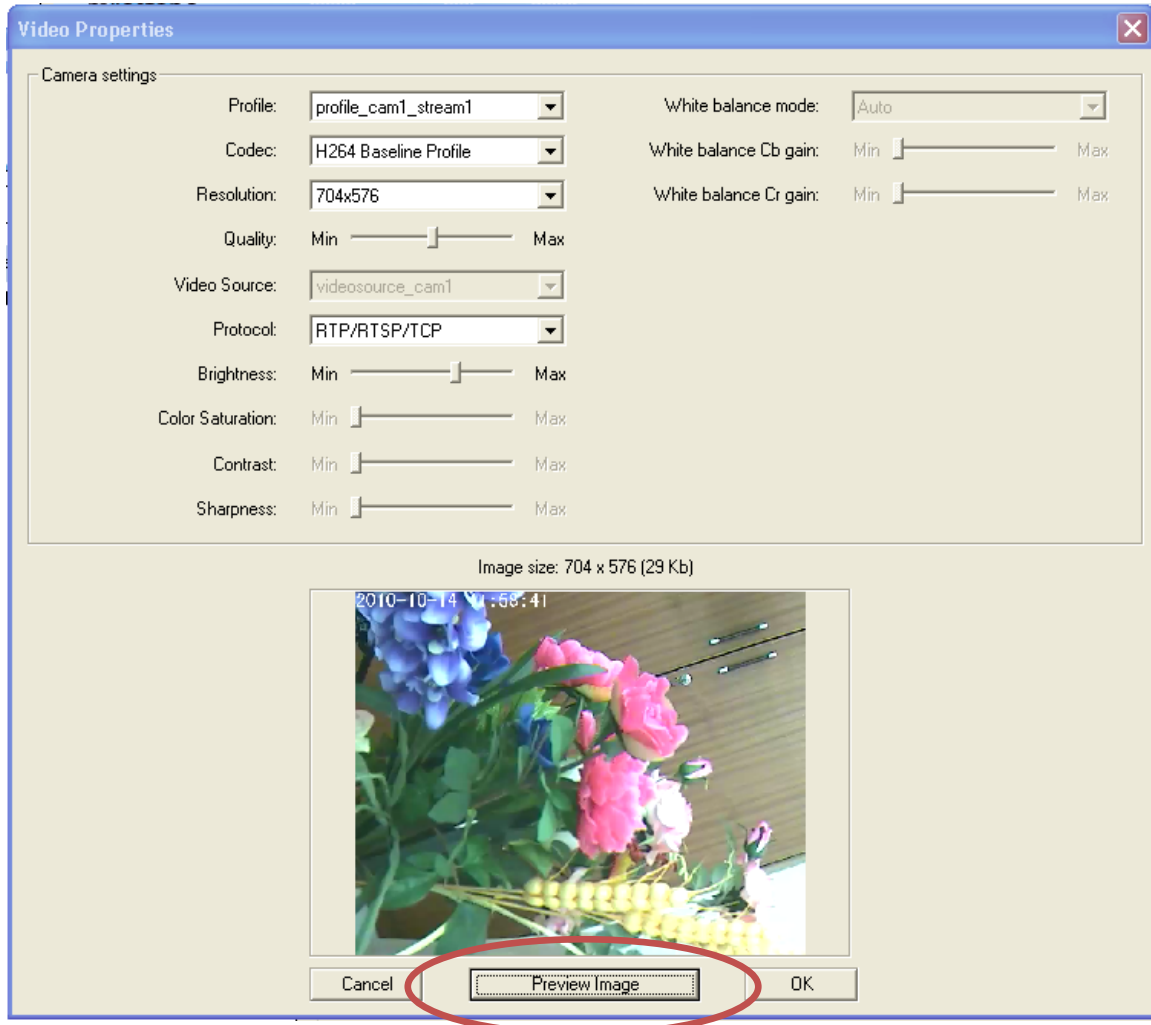


9. You set the stream profile ID, and then you must select the 2nd option for RTP/RTSP/TCP



10. You can select stream2 stream3. This matches the Stream ID as shown before on the IE settings page

11 Just to do a test you can click the **Preview Image**, this is a good check just to prove your settings and format.

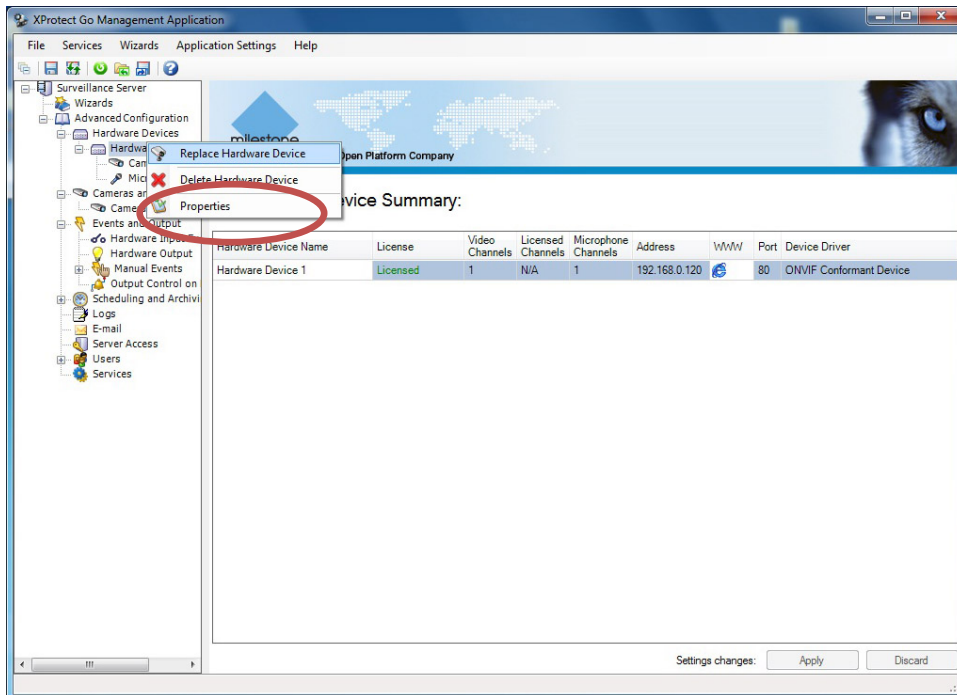


12. The one thing to keep in mind is that it is always best to use the IE browser to modify the stream settings, as this is the master control for the camera parameters. see previous section on this element.

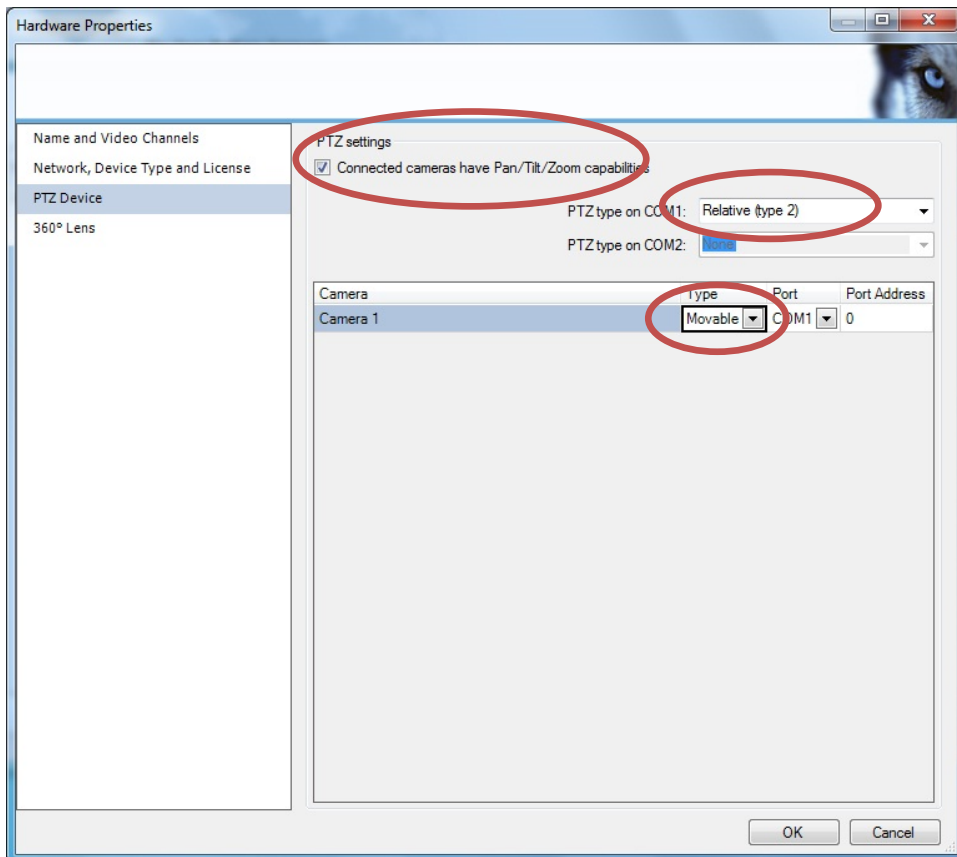
Note: if you find you can't detect the Onvif camera, it maybe that you have changed the default port inside camera, you can just use the manual option on the wizard to enter the IP and port numbers as required.

## *PTZ*

PTZ Cameras function well with Milestone be sure to set the following details when you add a PTZ device to Milestone software.



Right click on the hardware device to read the Properties of the camera.



Select PTZ Device having Pan/Tilt.

PTZ type select as Relative (type 2).

Set Camera 1 or your cameras as Movable.

Note: Always be sure to have the latest device drivers for Milestone software installed.